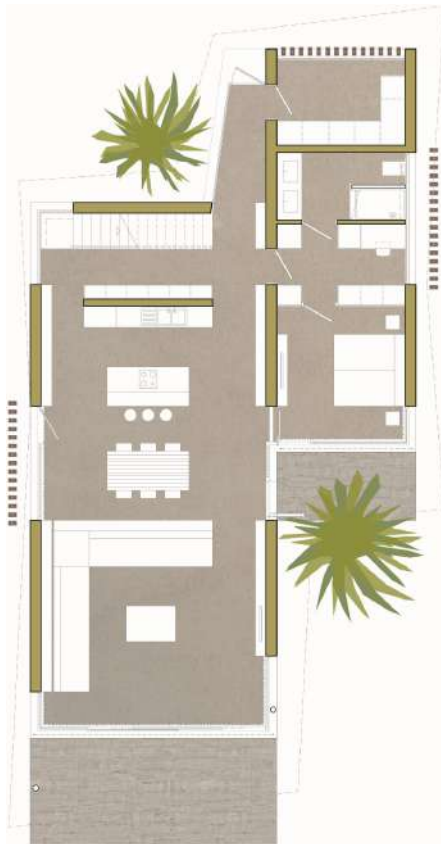


BASAMENT LEVEL / PLANTA SÓTANO



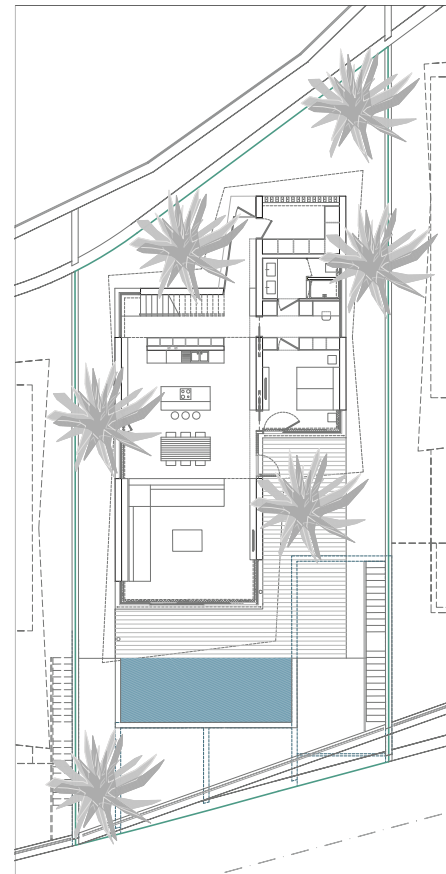
APT. 19_A3



GROUND FLOOR / PLANTA BAJA



UPPER FLOOR / PLANTA ALTA



URBANIZATION / URBANIZACIÓN



PLOT SURFACE / SUP. DE PARCELA

439,16 m²

BUILT AREA / SUP. CONSTRUIDAS

GROUND FLOOR / PLANTA BAJA 155,16 m²

TERRACES / TERRAZAS (50%) 23,25 m²

TOTAL 178,41 m²

UPPER FLOOR / PLANTA ALTA 8490 m²

TERRACES / TERRAZAS (50%) 10,30 m²

TOTAL 95,20 m²

TOTAL GF + UF / TOTAL PB + PA 273,61 m²

GARAGE + INST / GARAJE + INST 8195 m²

TOTAL 355,56 m²

USABLE AREA / SUP. ÚTILES

GROUND FLOOR / PLANTA BAJA

01 LOBBY / DISTRIBUIDOR 17,38 m²

02. KITCHEN / COCINA 412 m²

03. LIVING ROOM / SALÓN 36,54 m²

04. BEDROOM 1 / DORMITORIO 1 13,86 m²

05. DRESSING ROOM / VESTIDOR 5,89 m²

06. BATHROOM 1 / BAÑO 1 6,72 m²

07. LAUNDRY ROOM / SOLANA 5,17 m²

TOTAL GF/ TOTAL PB 126,68 m²

UPPER FLOOR / PLANTA ALTA

01. LOBBY / DISTRIBUIDOR 8,21 m²

02. BATHROOM 2 / BAÑO 2 9,72 m²

03. DRESSING ROOM / VESTIDOR 4,69 m²

04. BEDROOM 2 / DORMITORIO 2 11,76 m²

05. BATHROOM 3 / BAÑO 3 9,72 m²

06. DRESSING ROOM / VESTIDOR 4,69 m²

07. BEDROOM 3 / DORMITORIO 3 11,76 m²

TOTAL UF / TOTAL PA 60,55 m²

TOTAL GF + UF / TOTAL PB + PA 187,23 m²